

Noise effects of combinations of tyres and roads

Gijsjan van Blokland



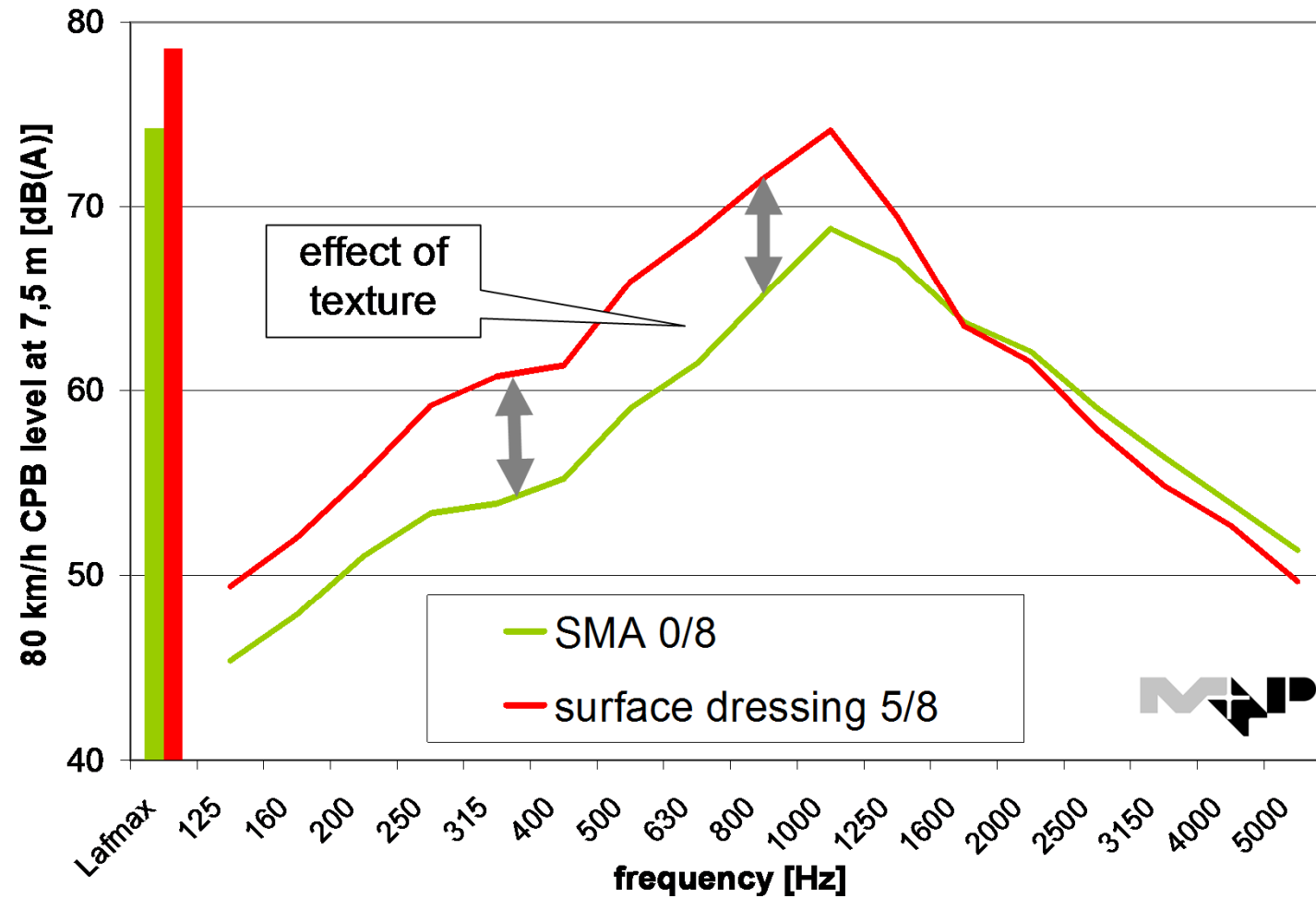
大阪
inter-noise 2011
Osaka Japan September 4-7

Sound Environment as a Global Issue

MBBM
MÜLLER-BBM GROUP

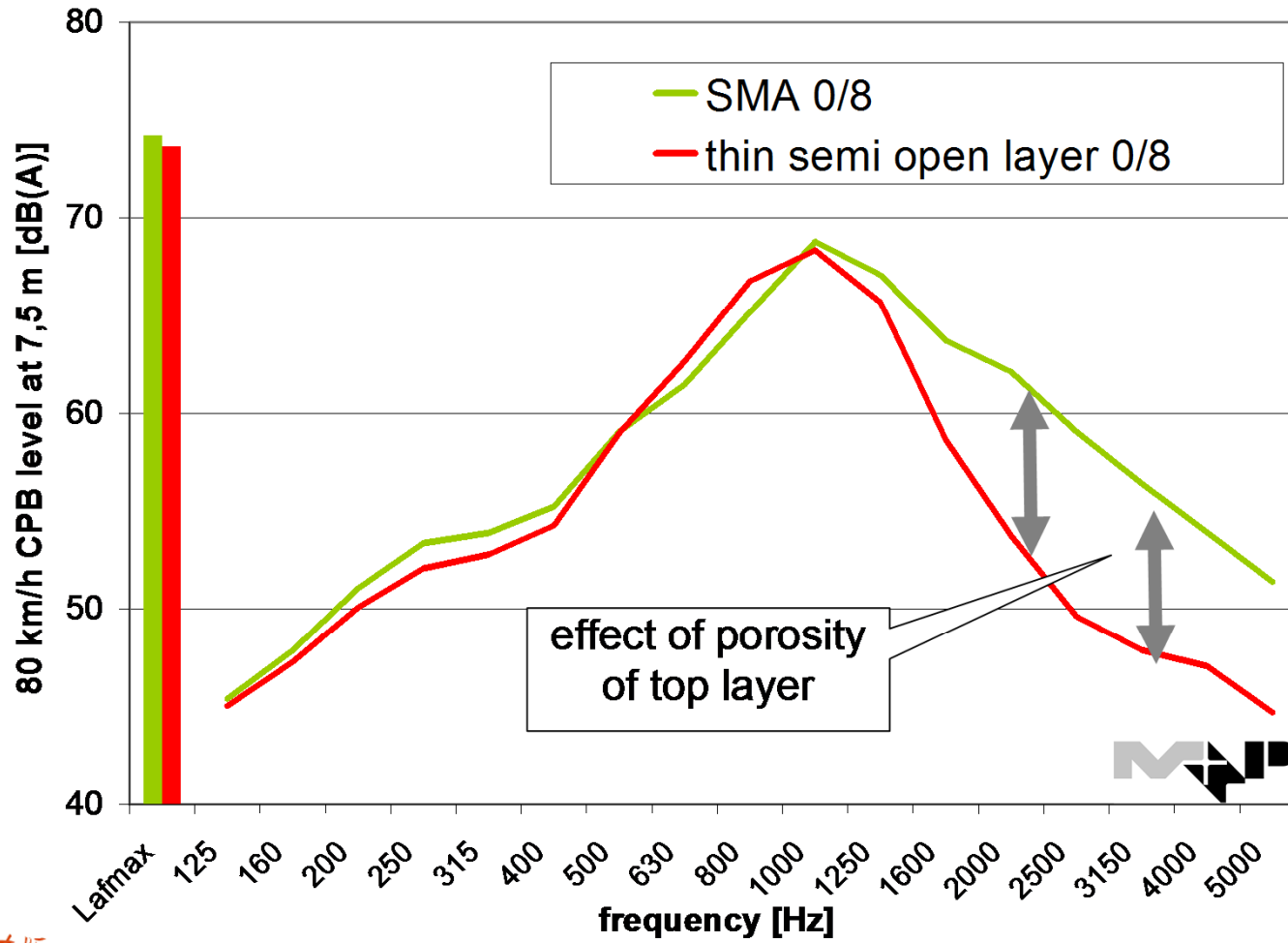
Normal car tyres on smooth and rough 0/8 mm surface

noise effect of tyre/road combi's



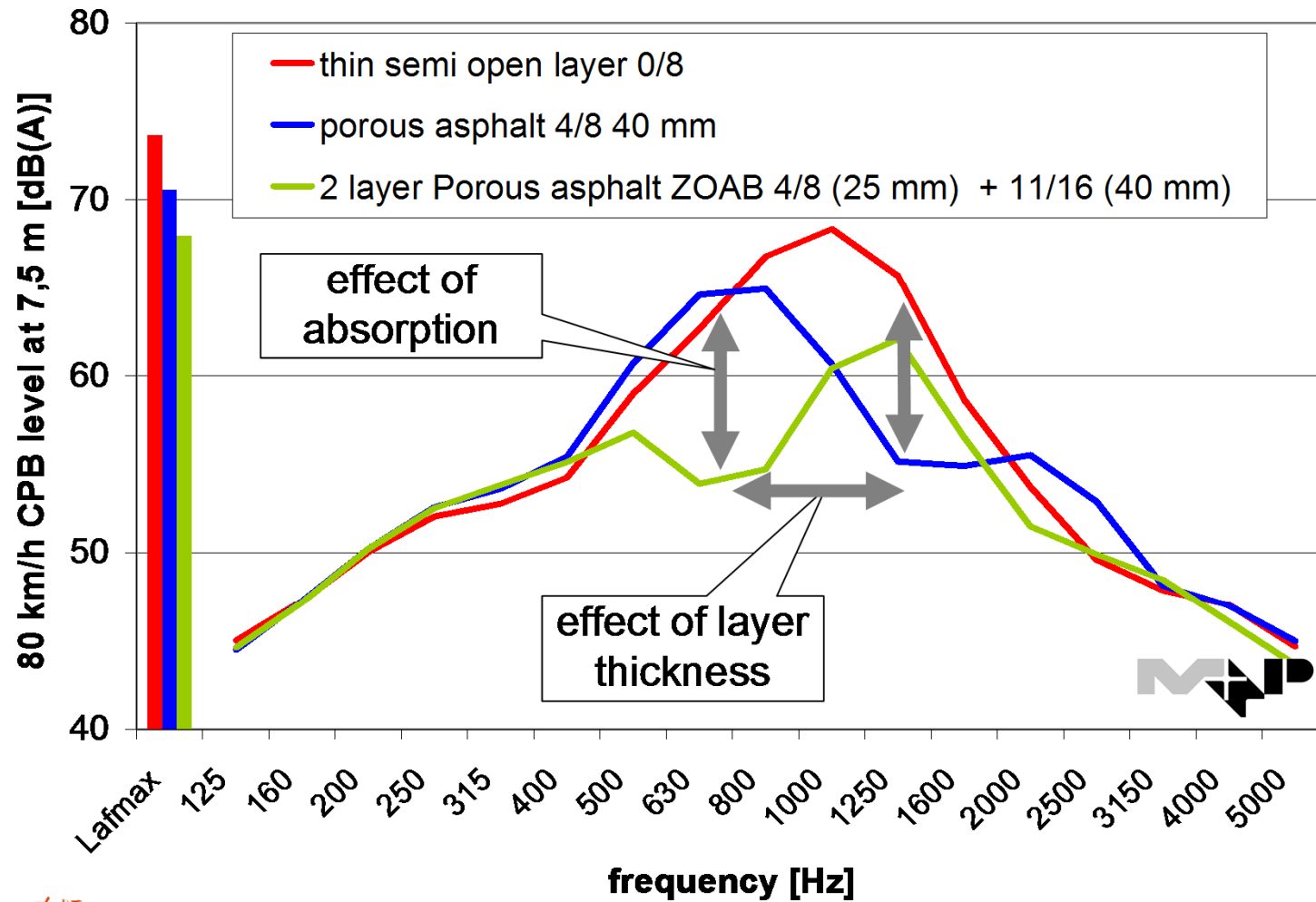
Normal car tyres on open and dense 0/8 mm surface

noise effect of tyre/road combi's



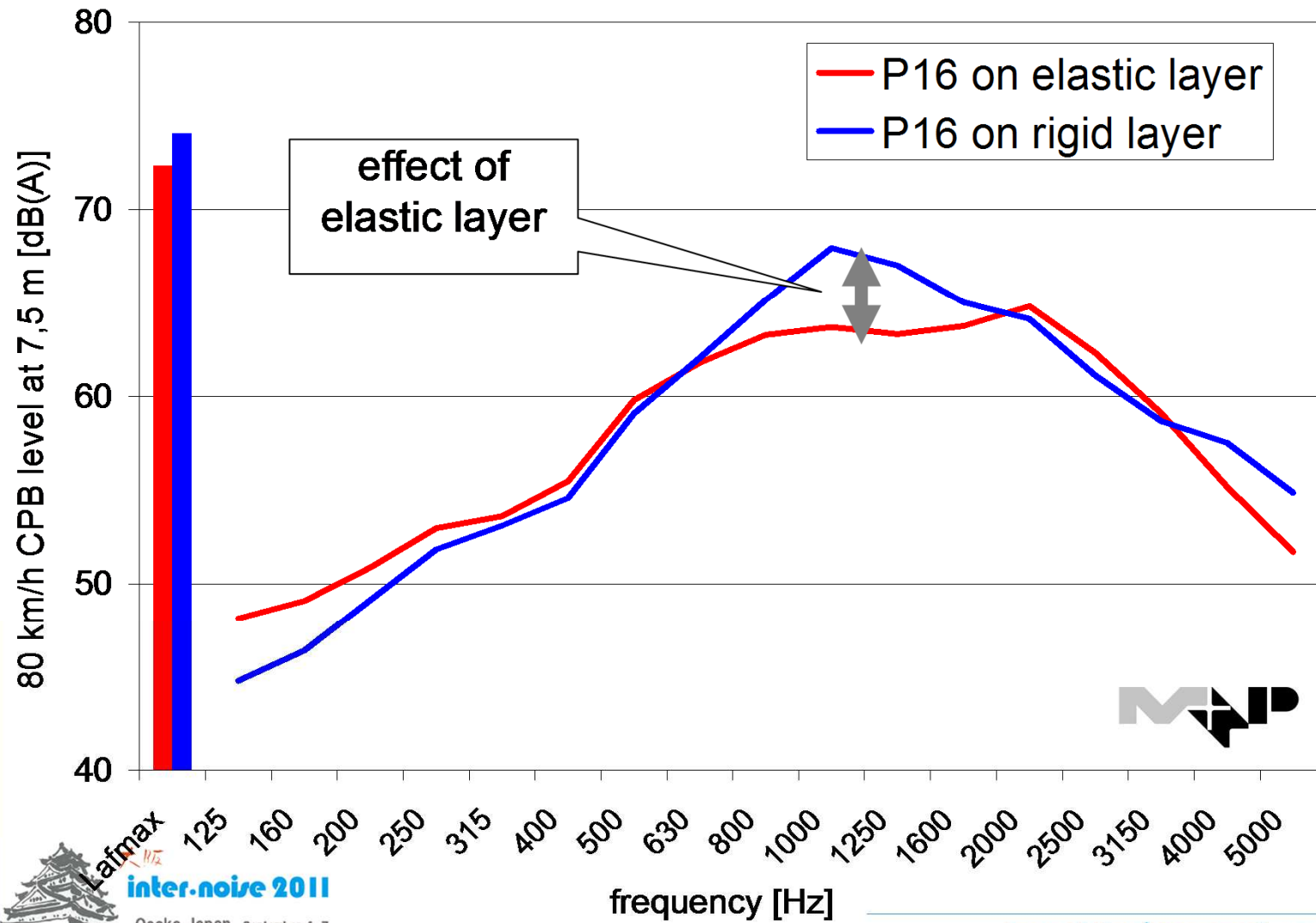
Normal car tyres on open and on absorbing 0/8 mm surface

noise effect of tyre/road combi's

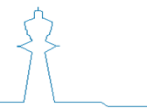
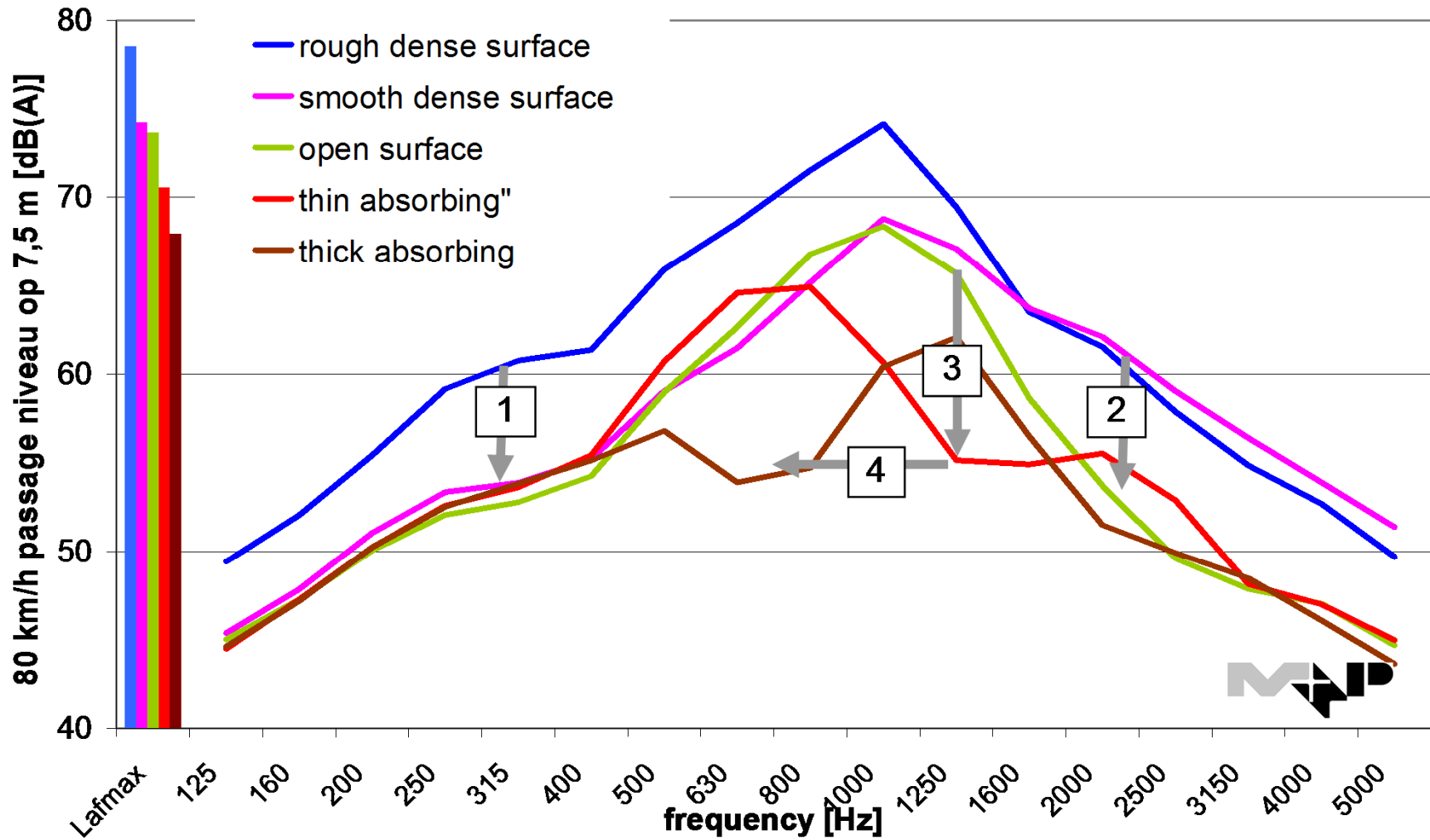


Normal tyres on rigid and flexible layer

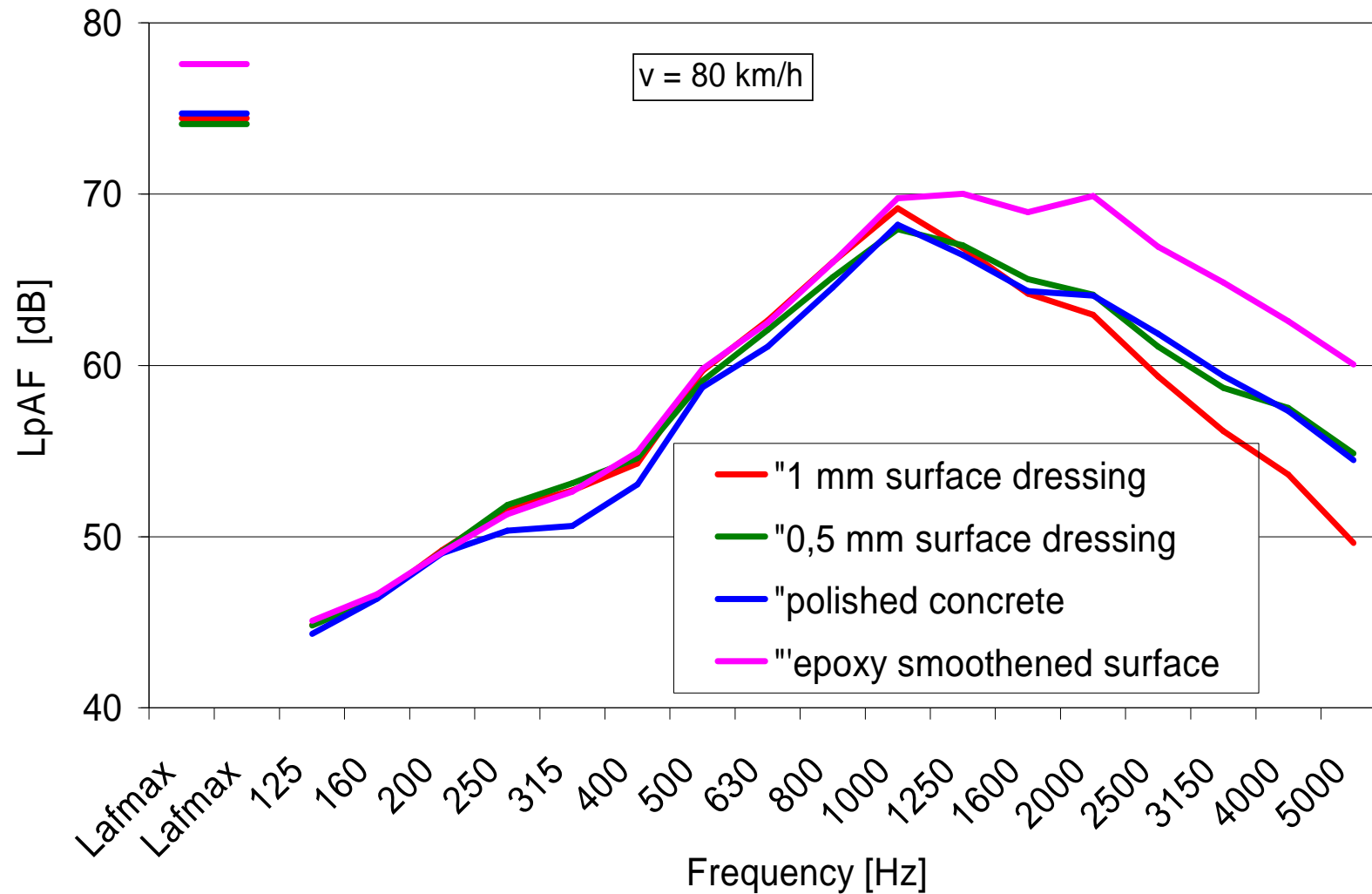
5 noise effect of tyre/road combi's



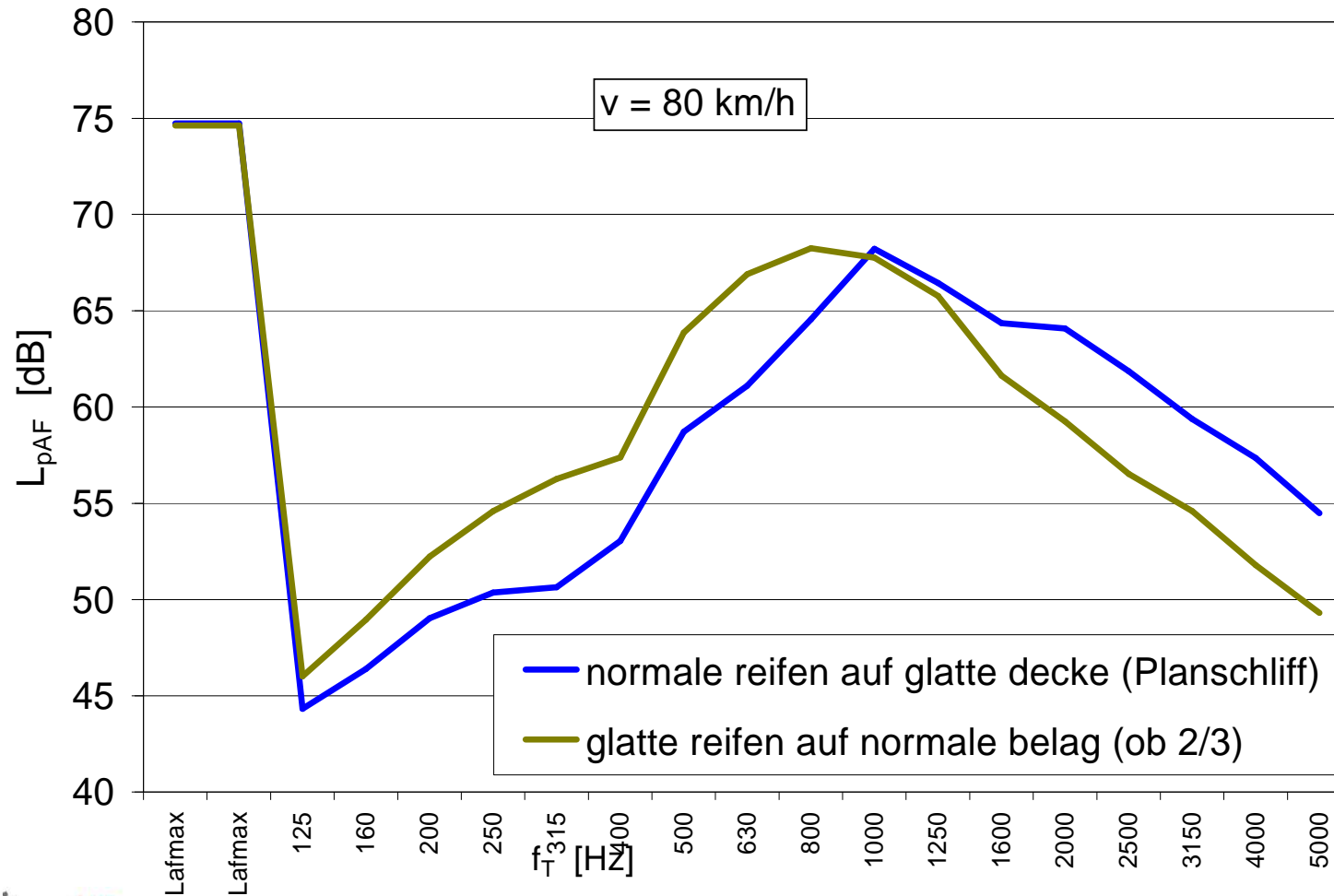
All surface types



Normal tyres on smooth surfaces



Smooth on rough surface vs. rough tyre on smooth surface



Smooth/normal tyre on smooth/rough road

